



- NOTES
- KEY:
- High quality pedestrian / public realm space. Highly accessible for mobility impaired. Opportunities for hard and soft landscaping, green spaces, trees, seating and gathering areas, public art spaces, children's play zones. High quality street lighting, street furniture and digital infrastructure.
 - Bi-directional cycleway. High quality surface to complement street scene. Vertical lane segregation and associated tactile surfaces. 3m Wide with priority at junctions and interchanges wherever possible. Linking key arrival and destination points in Doncaster Town Centre.
 - Vehicle carriageway. Narrow lanes, one ways, remove on street parking, high quality disabled parking places and loading bays to complement street scene. Vehicle is to feel the 'guest' in the otherwise pedestrian / cycle environment.

Duke Street Looking South - Existing



Example - Before



Example - Before



Concept - Duke St Looking South



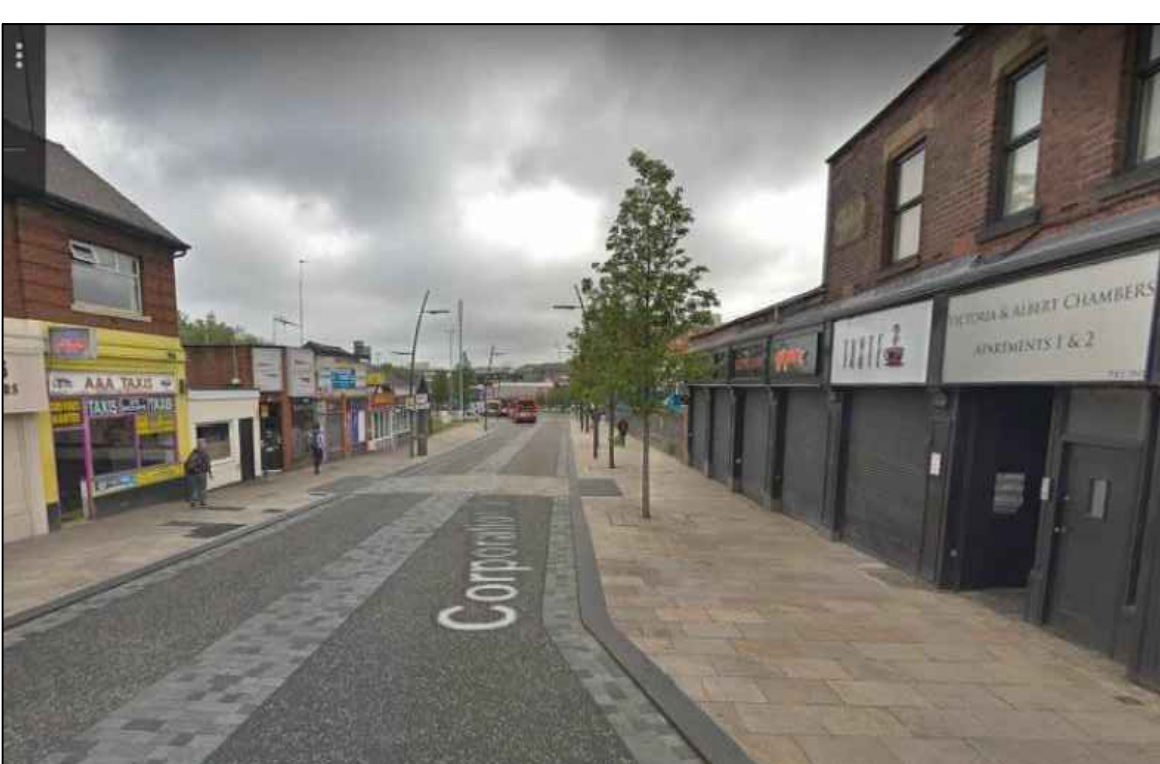
Example of Improved Street Scene



Example - After



Example - After



Concept - Duke Street Looking North



This map is reproduced from Ordnance Survey material with the permission of Ordnance Survey on behalf of the Controller of Her Majesty's Stationery Office © Crown copyright. Unauthorised reproduction infringes Crown copyright and may lead to prosecution or civil proceedings. (100019782) (2011)

Rev.	Revision Details	Rev by	Chk by	Date

Doncaster Council
ECONOMY & ENVIRONMENT
INVESTMENT & MAJOR PROJECTS
Civic Office
Waterdale
Doncaster, DN1 3BU
Assistant Director: Scott Cardwell

Project

**Doncaster Town Centre
Active Travel and Digital
Infrastructure Programme**

Drawing Title

**Quality Streets 2021/22
Concept Design**

Drawn by	Paul Carey	e-mail	paul.carey@doncaster.gov.uk
Approved by	SG	Telephone	01302 735098
Date	Dec 2020	Fax	01302 735028
Scales		Drawing No.	29897-C1
NTS		Sheet	1 of 1
		Stage / Revision	Concept